

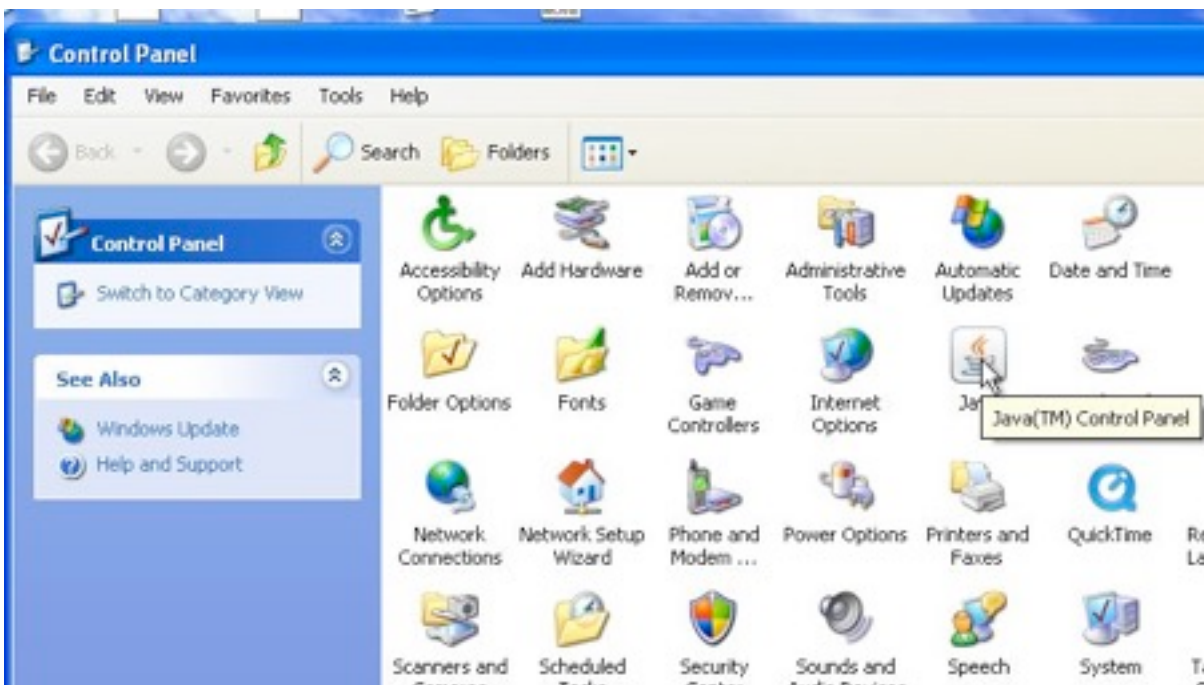
# Instructions for Removing ePete on Windows

1. Remove any existing versions of ePete from your system.

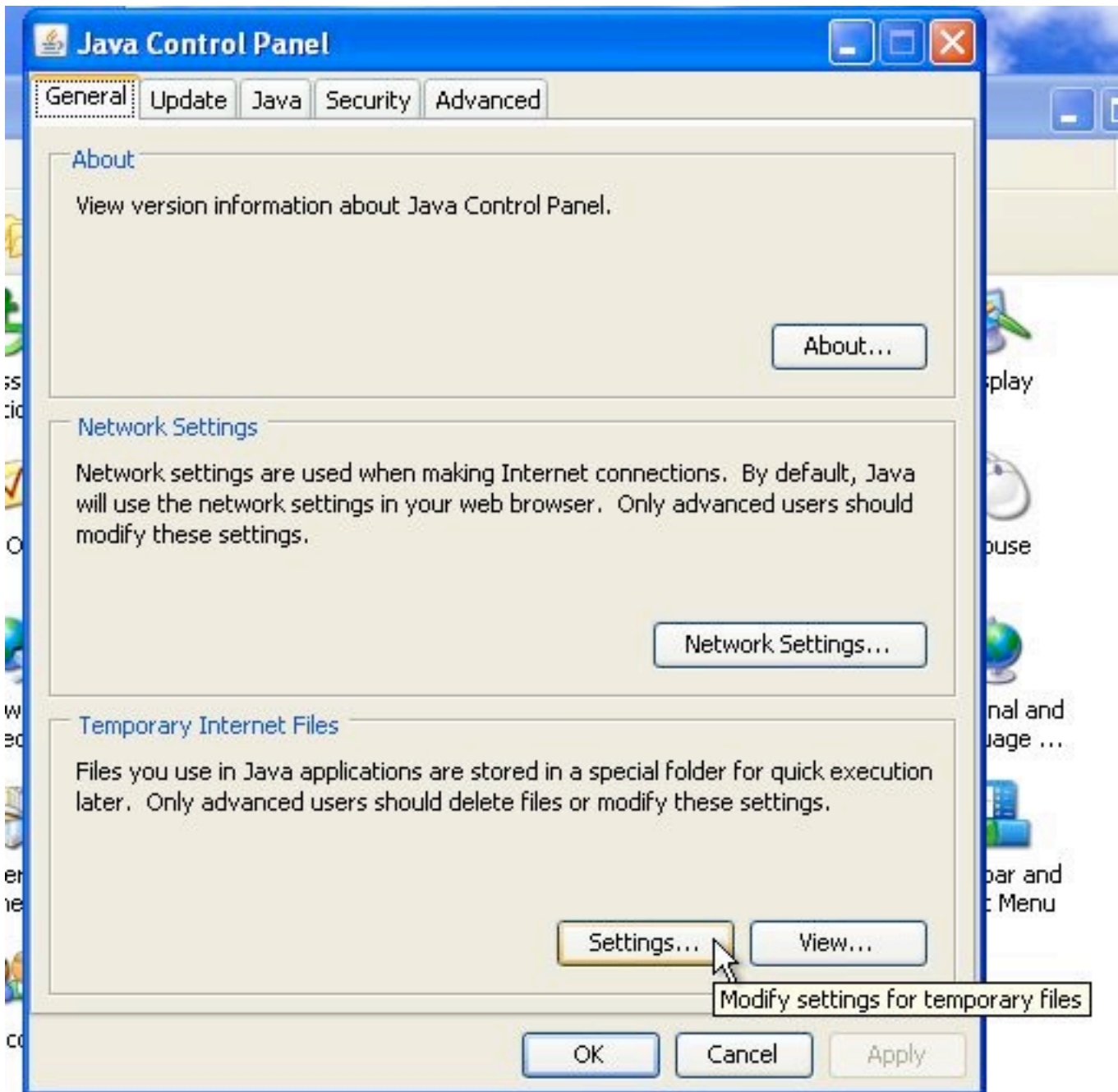
a) Open the control panels.



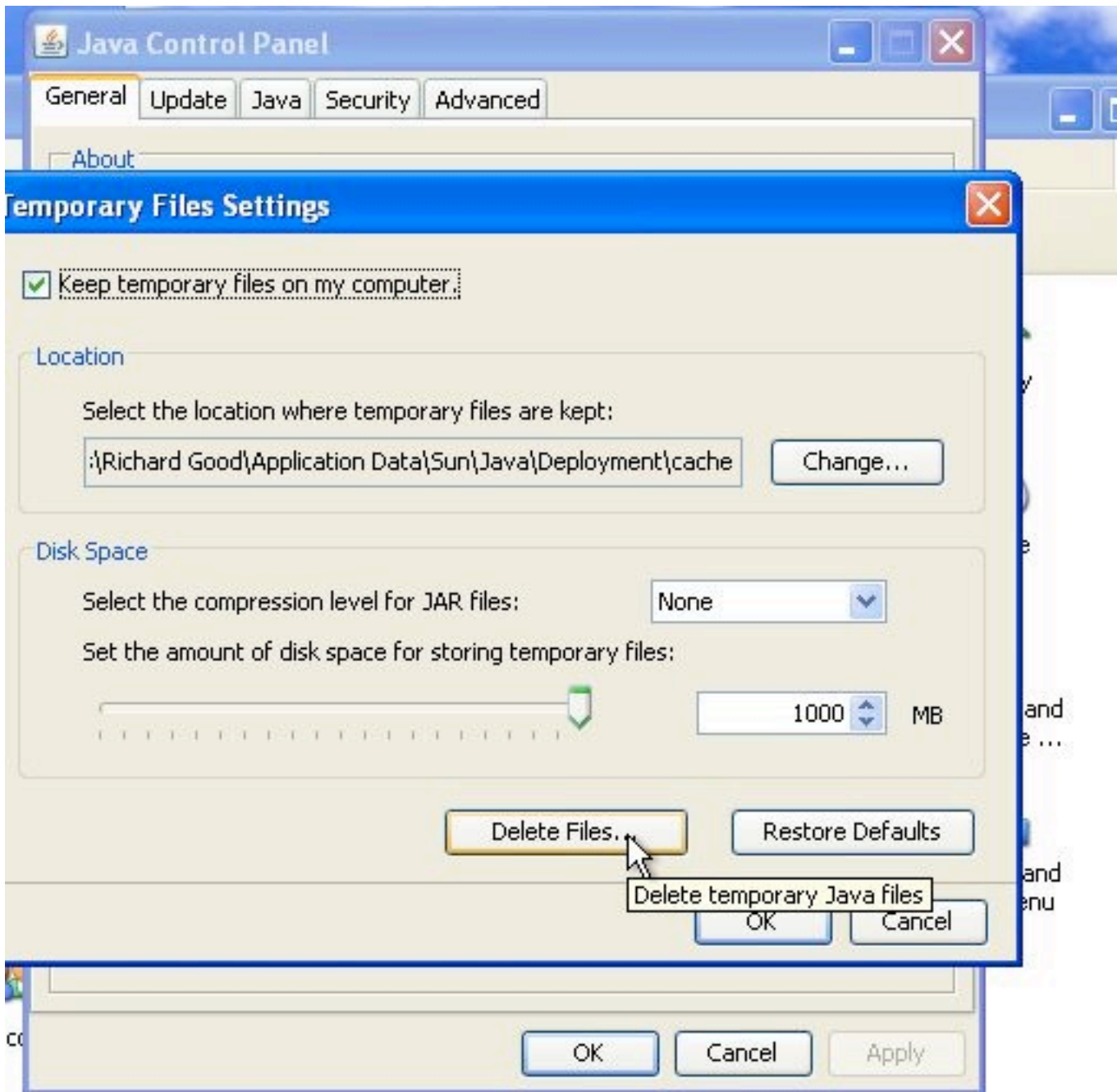
b) Open the Java control panel



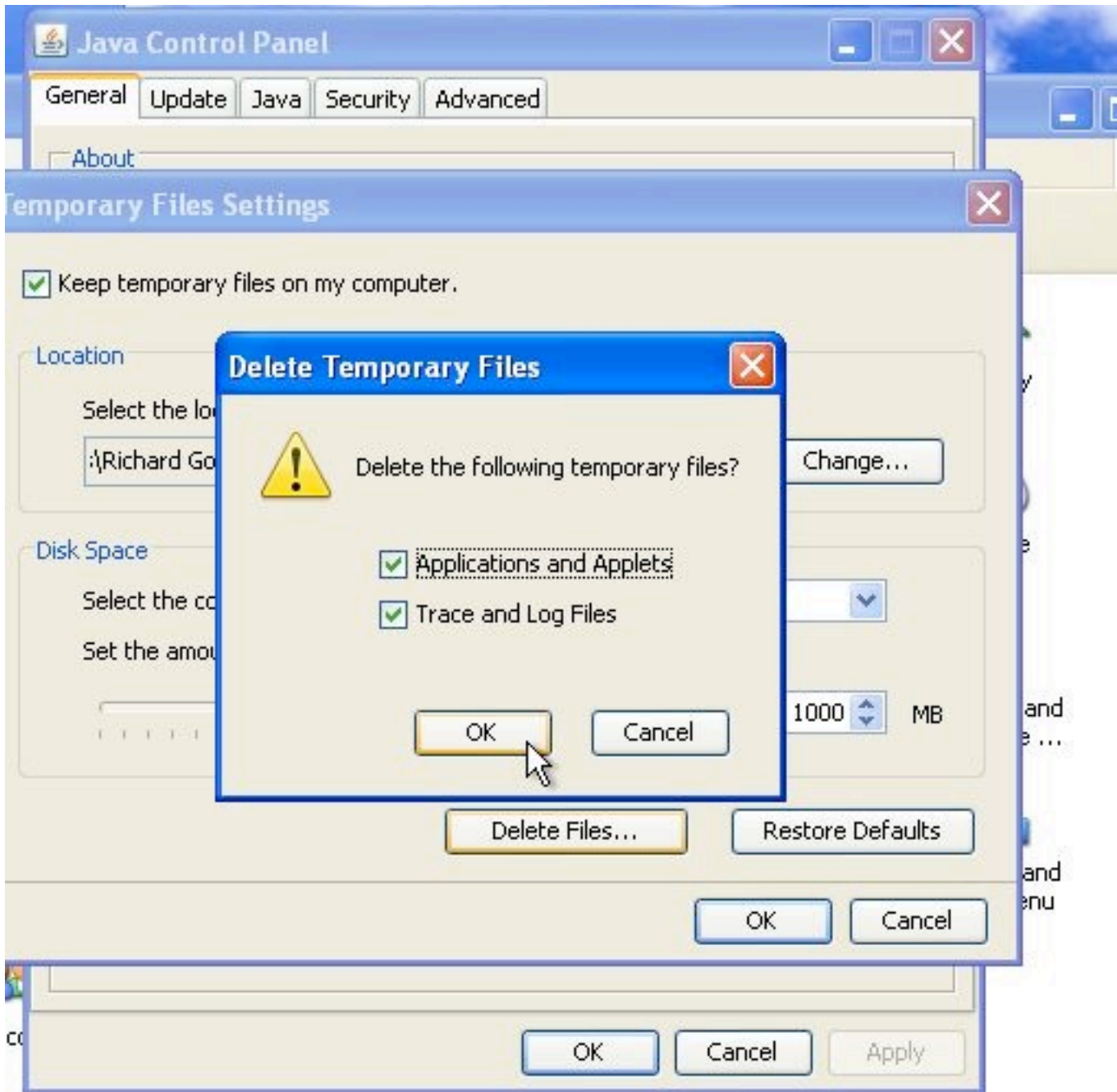
c) Open Settings in Temporary Internet Files



d) Select Delete Files



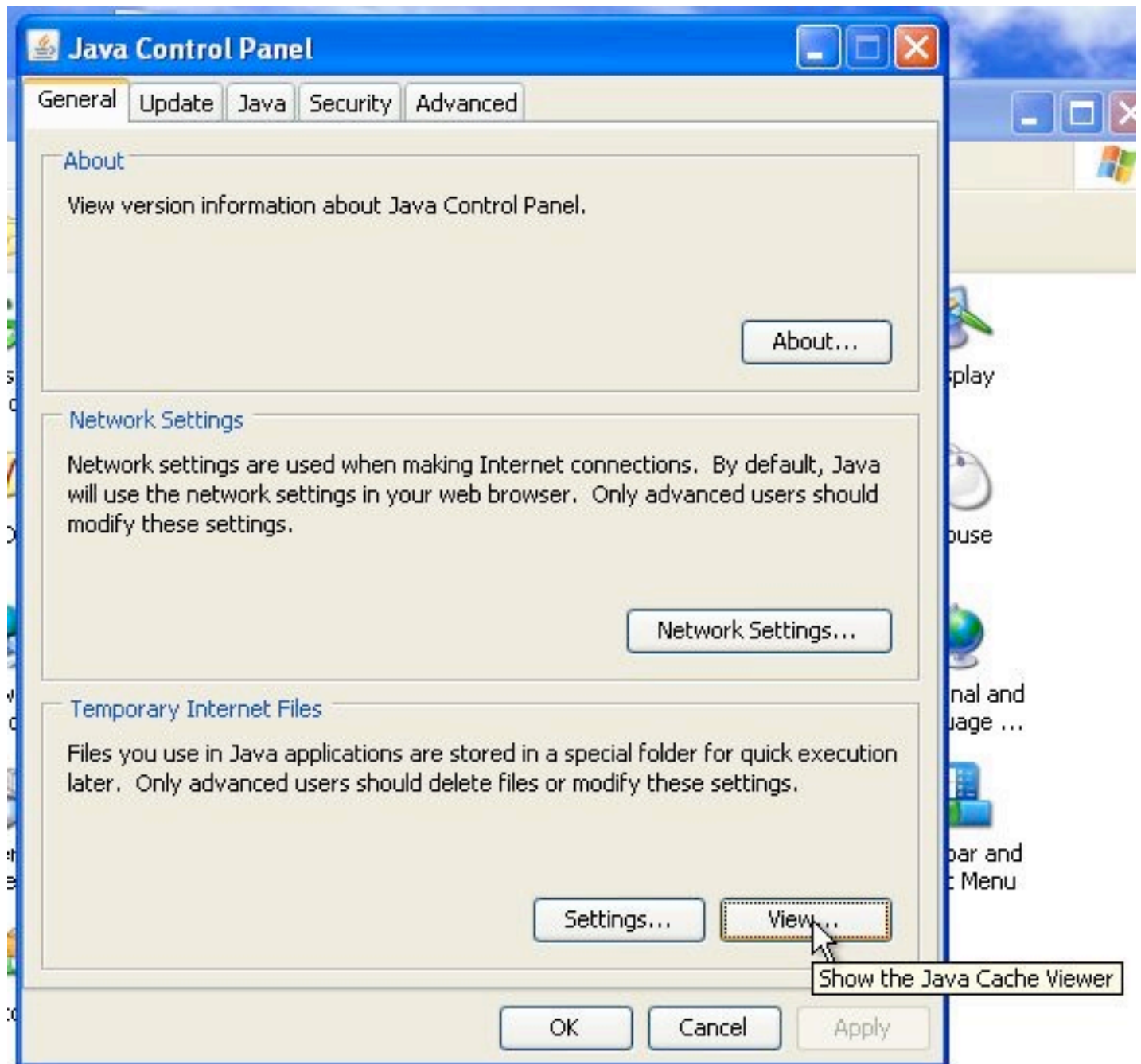
e) Click on OK be sure both boxes or checked as shown below.



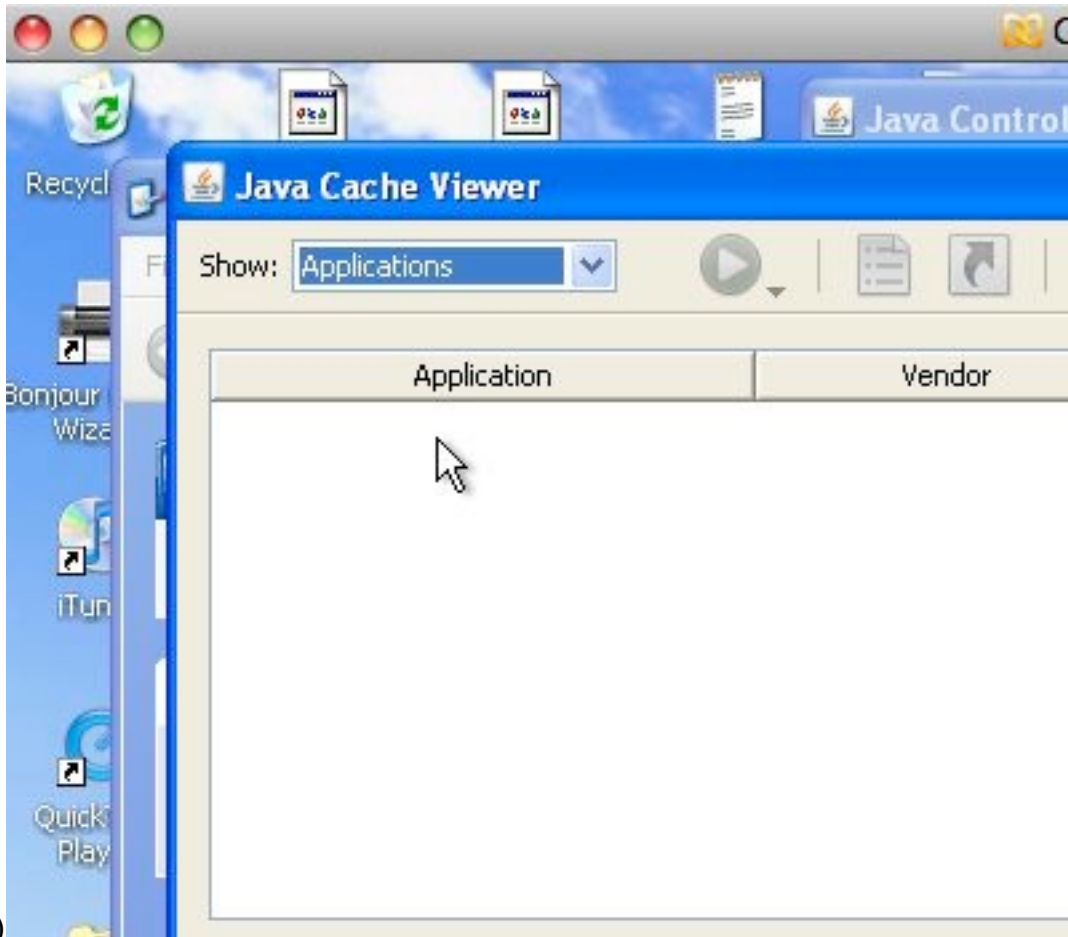
At this point you have now removed ePete3 and any other java applications installed on your computer.

2) If desired, verify ePete3 has been removed by returning to the Java Control Panel.

a) Select View



b) Choose “Show Applications”, please not it may start with Deleted Applications you need to choose “Show Applications” to verify that all applications are gone. The blank screen shown below illustrates what you should see.



a)

Now close all control panels and other applications until you have an empty desktop window with just your normal icons present. (Just like when you first start up your computer.)

