
Removing ePete

step by step

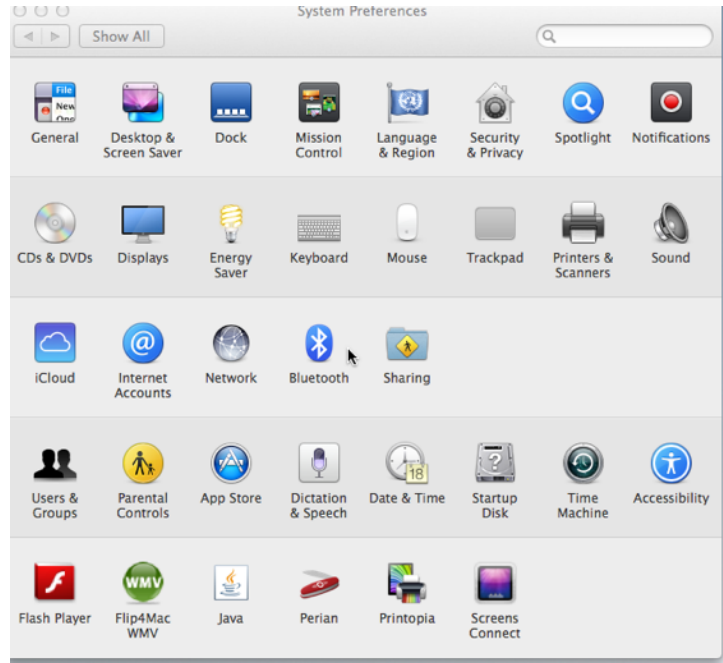
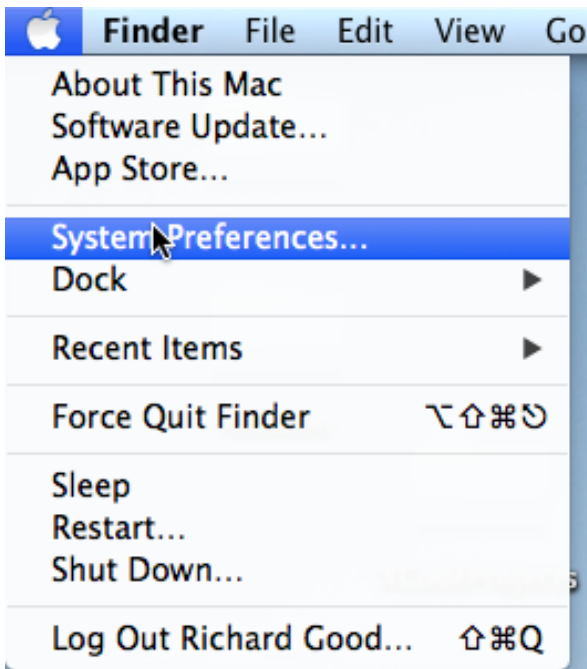
prepared on - June 19, 2014

Quick summary of the steps:

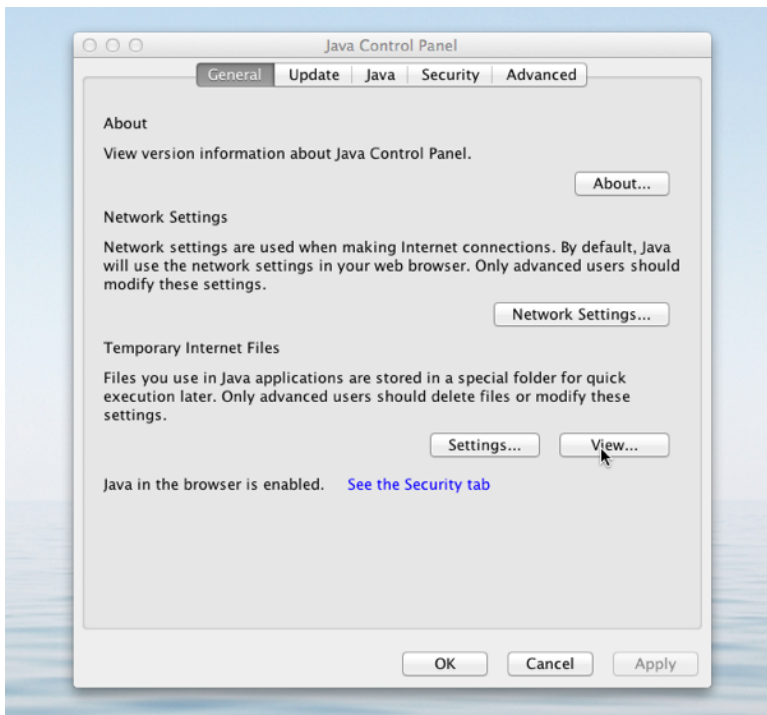
1. Open the Java control panel.
2. Select the general tab.
3. click on the view button.
4. Click once on the ePete application shown n the lower window.
5. Click on the red X icon on the top of the window.
6. Click on the "Applications" drop down upper left corner.
7. Select "Deleted Applications"
8. Click once on the ePete application in the lower window.
9. Click on the Red X icon at the top of the window.

Your done. Subsequent pages show illustrations of all of these steps.

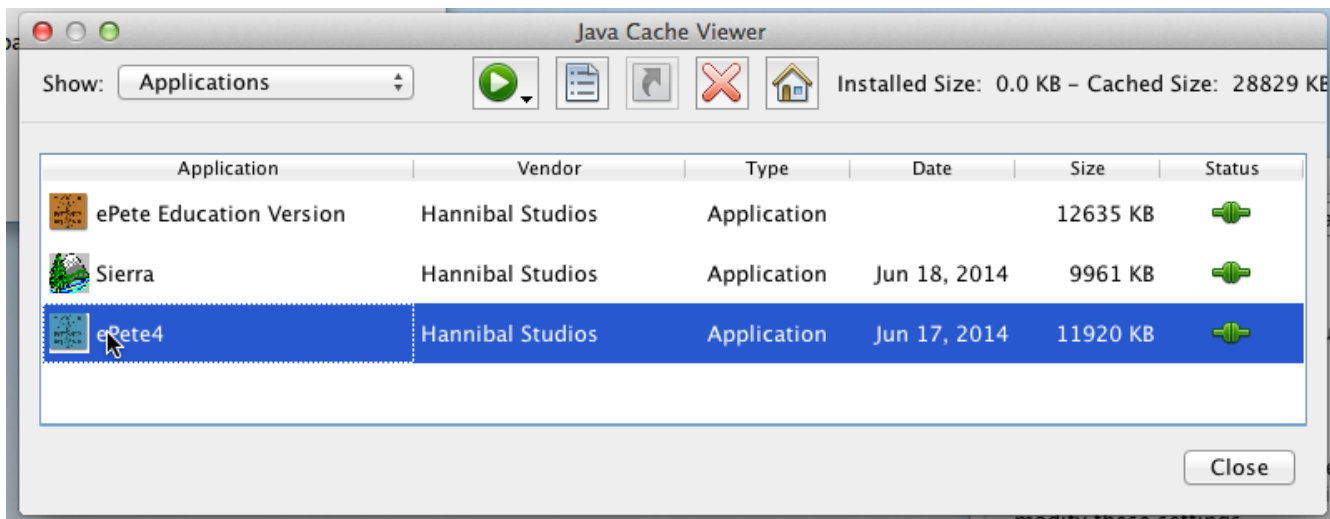
1. Open the Java control panel.



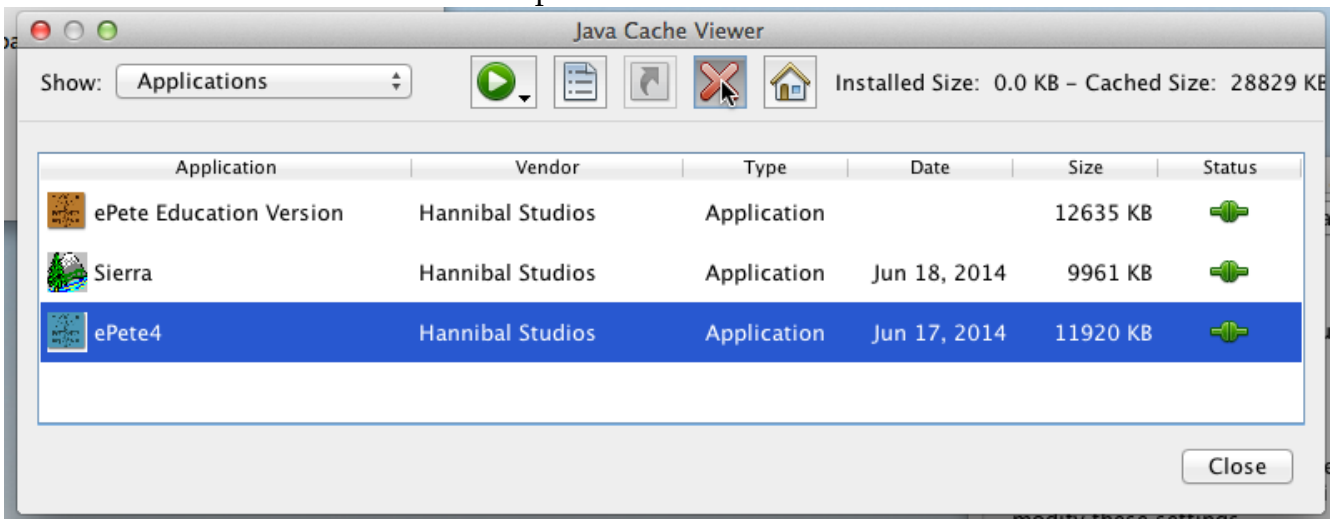
2. Select the general tab.



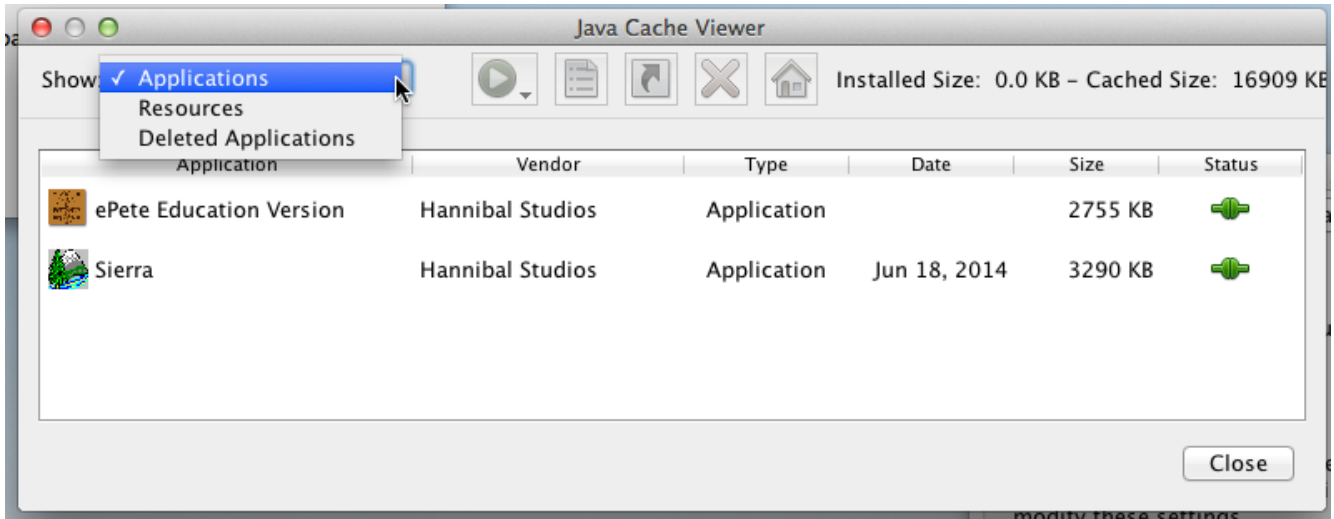
- click on the view button.
- Click once on the ePete application shown in the lower window.



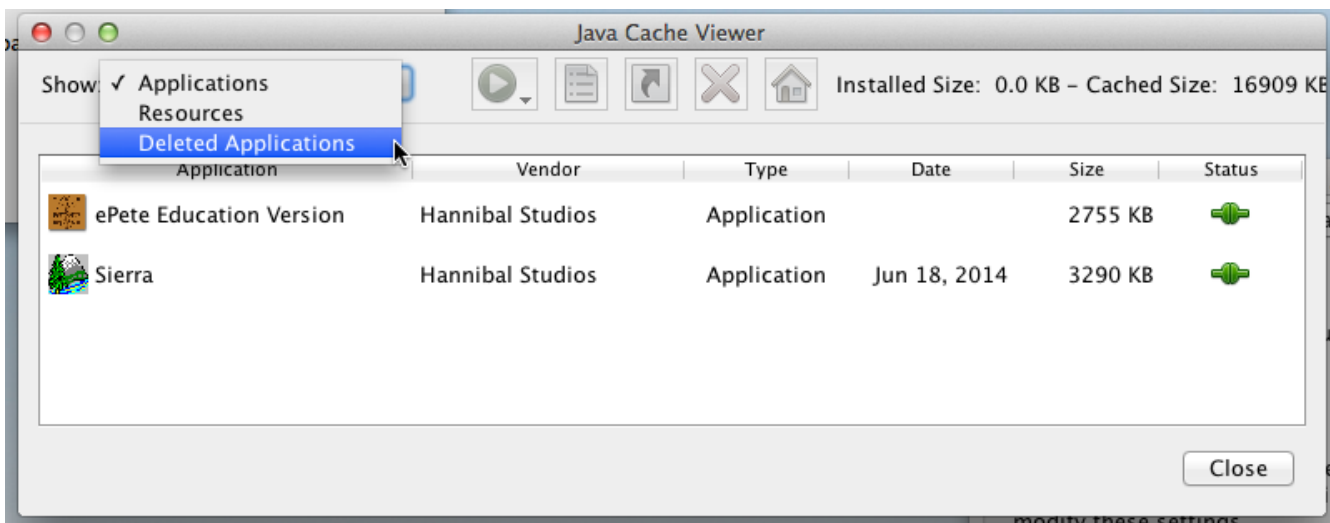
- Click on the red X icon on the top of the window.



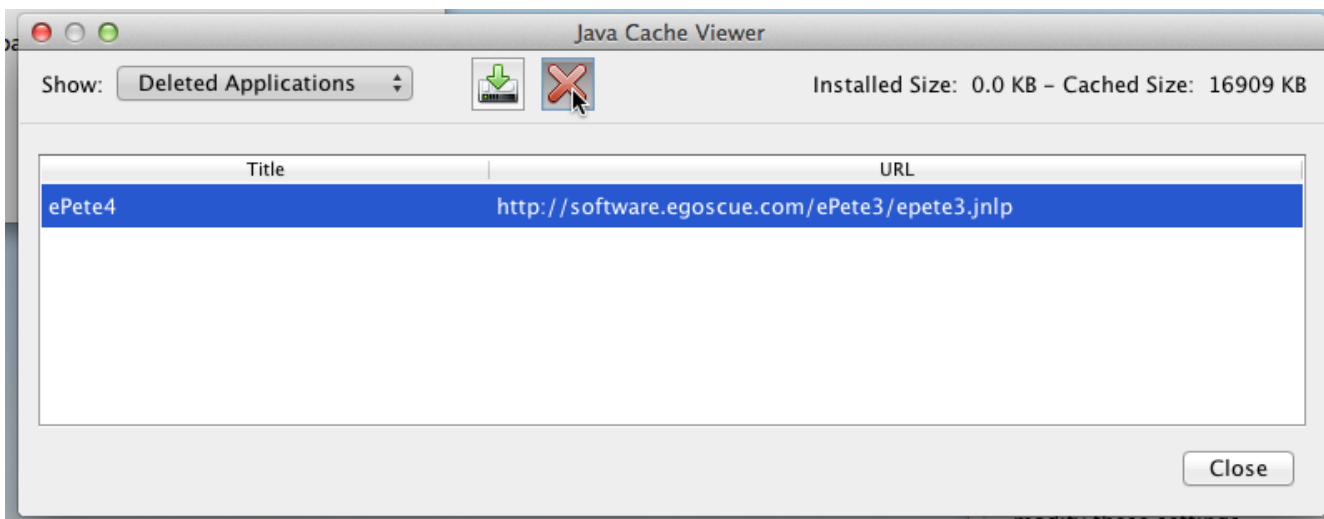
6. Click on the "Applications" drop down upper left corner.



7. Select "Deleted Applications"



8. Click once on the ePete application in the lower window.



9. Click on the Red X icon at the top of the window.

